

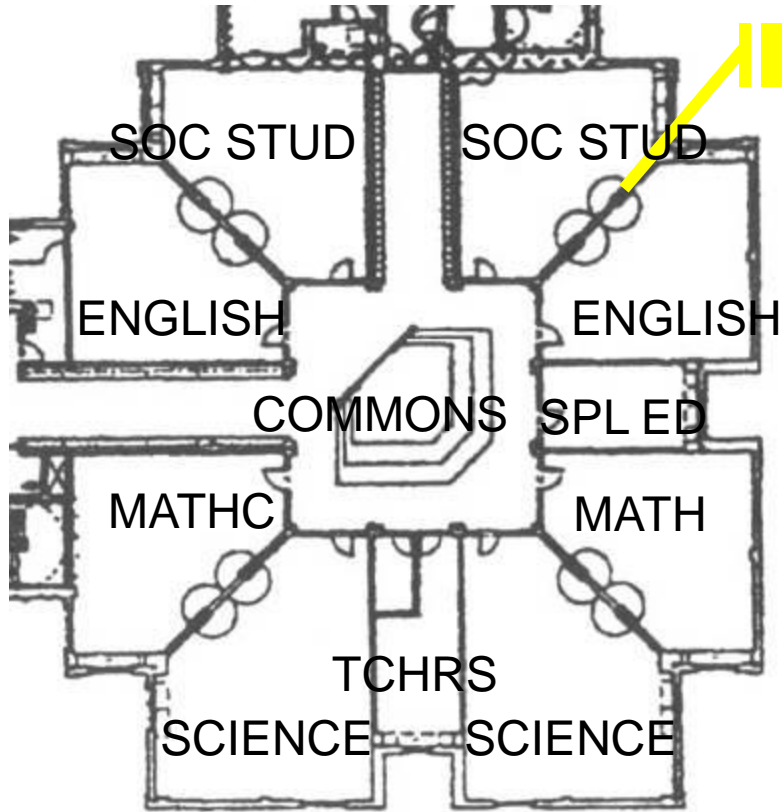


# Ipswich High/Middle School

Ipswich, MA

LCD Projector

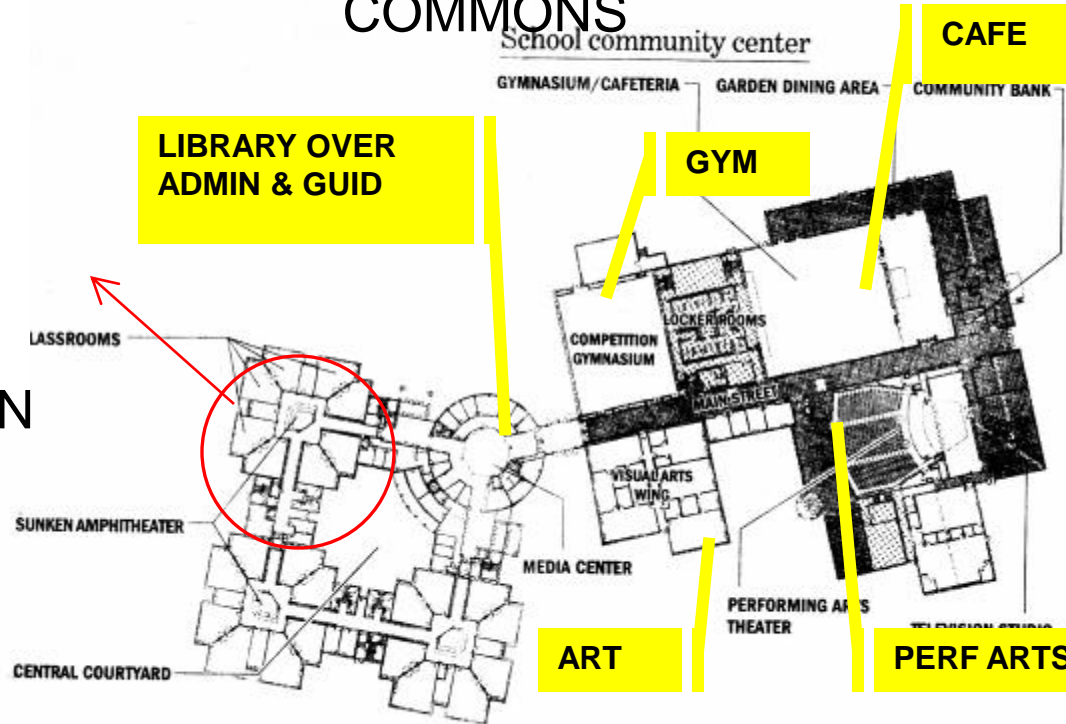
Double Doors



B

COMMONS

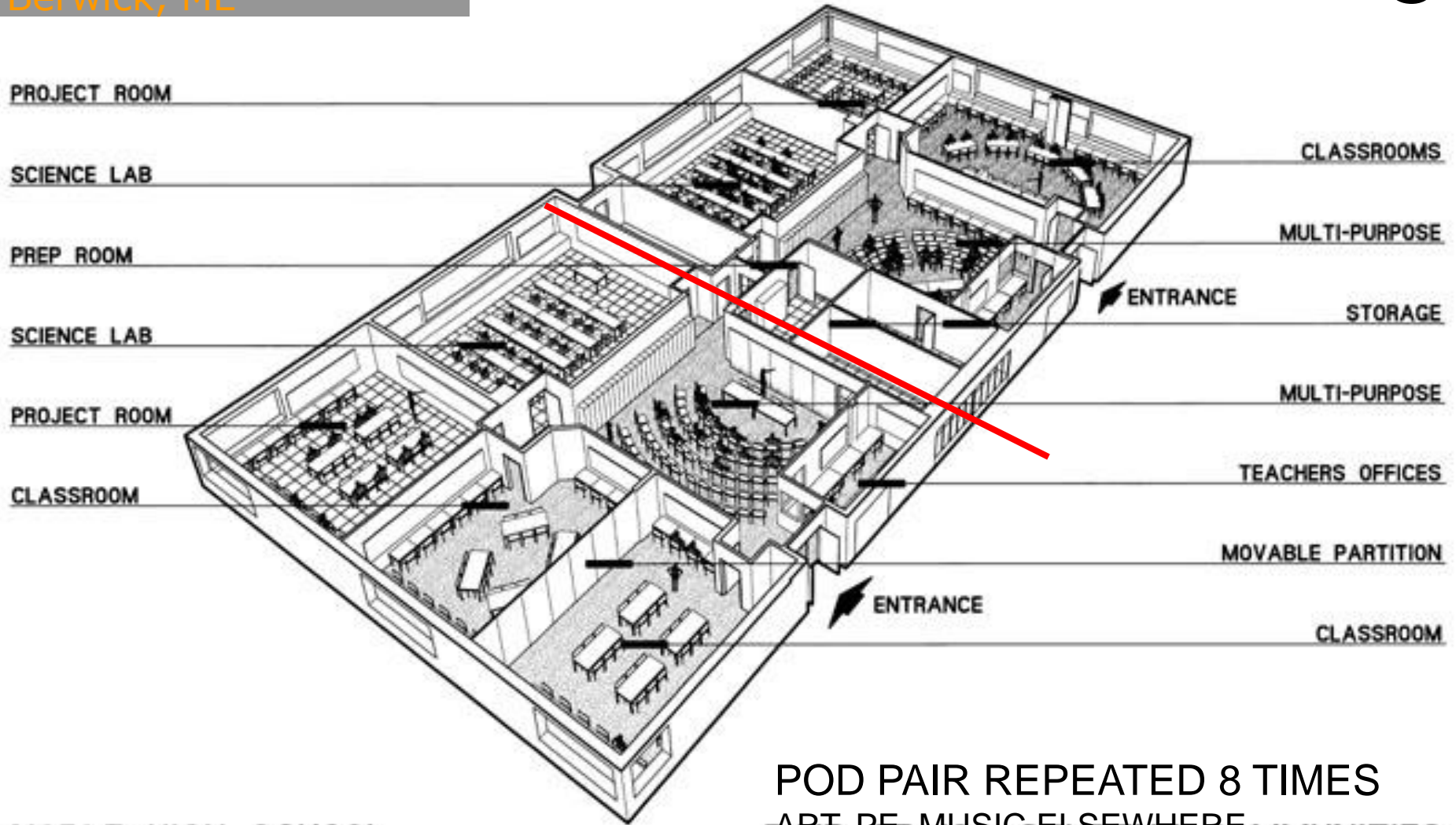
MIDDLE SCHOOL POD SHOWN  
 160-200 STUDENTS  
 1 OF 6 IN SCHOOL



# Noble High School

Berwick, ME

C



POD PAIR REPEATED 8 TIMES  
ART PE MUSIC ELSEWHERE  
PAIR OF 100 STUDENT COMMUNITIES

NOBLE HIGH SCHOOL  
NORTH BERWICK, MAINE

HARRIMAN ASSOCIATES



# Waverly High School

Waverly, NB

HOUSE FOR 175-200 STUDENTS

FOLDING WALL

'FAT L' CLASSROOM

PERF ARTS

CAFE

PE

LIBRARY

HOUSE 1

HOUSE 2

HOUSE 3

HOUSE 4

SCIENCE AND INDUSTRIAL TECHNOLOGY

STORAGE AND PREP.

FLEXIBLE LEARNING AREAS

SMALL GROUP ROOM

LOUNGE FURNITURE

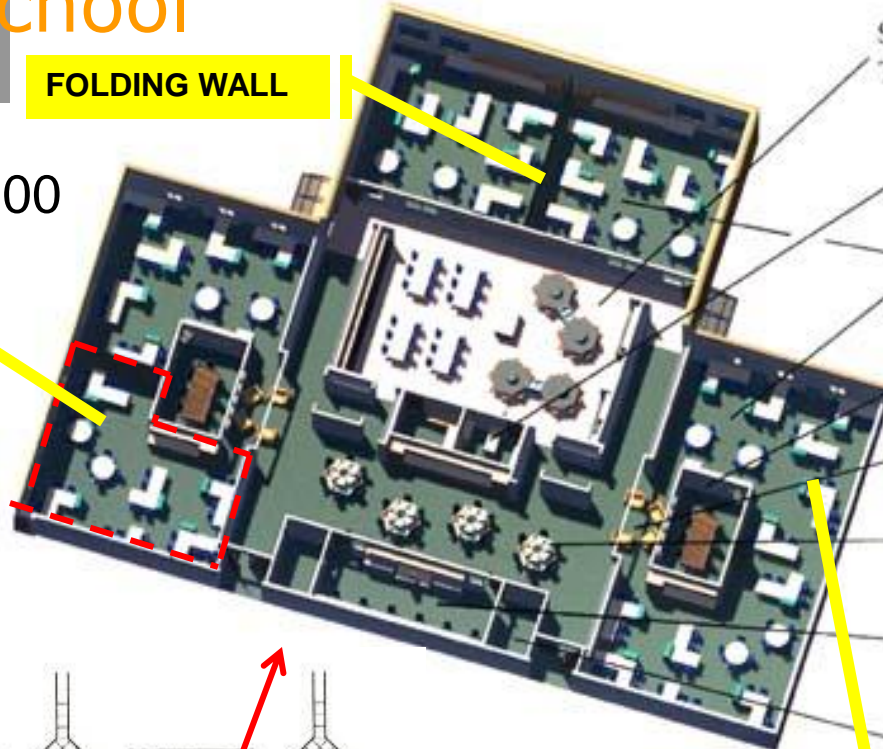
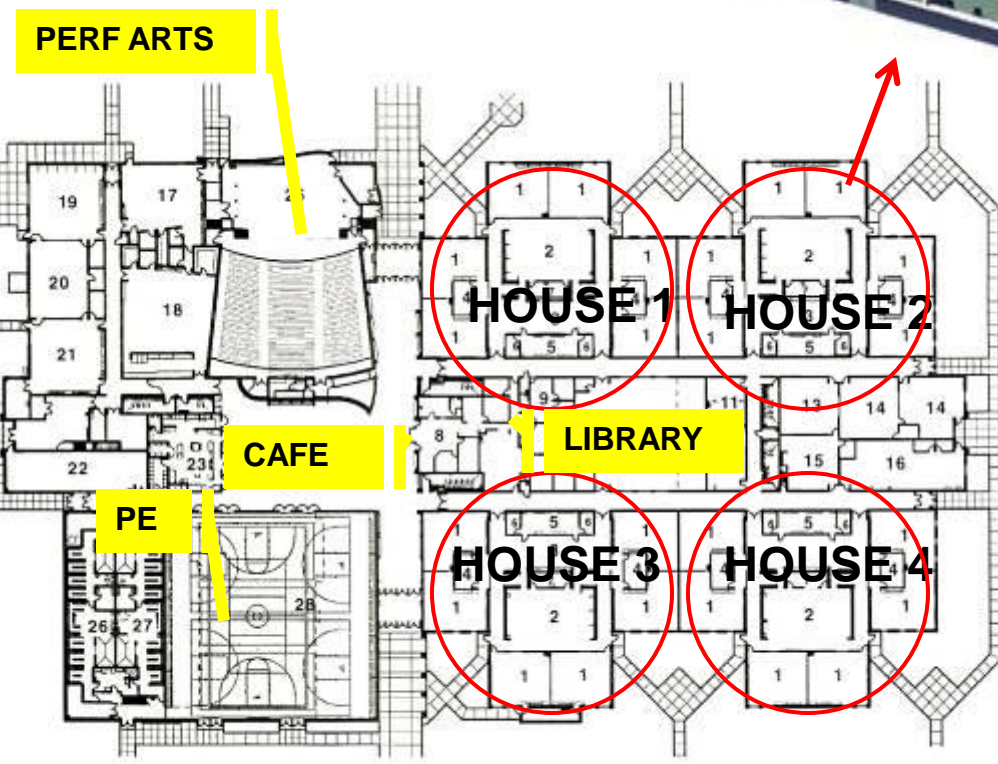
COMPUTER RESOURCE

TEACHER RESOURCE

CONFERENCE ROOM

FOLDING WALL

D



# Canby Applied Technology Center

Canby, OR

E

ENGINEERING

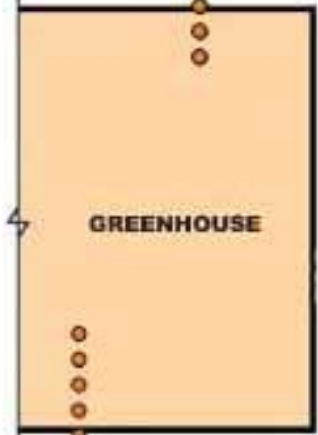
BIO-AG

COMMUNICATIONS

CLASSROOM

BOARD ROOM

TEACHER OFFICE: TECH + CORE





# Canby Applied Technology Center

Canby, OR

E



- Thematic Learning
- Academic & Technical Learning
- Project-Based Learning

FRANK LOCKER Educational Planning

• What is and where is a classroom?

Dull, Olson, Weekes Architects



# Australian Maths + Science School

Adelaide, AU

F

## TEACHER TEAMS, PROJECT LEARNING + DIDACTIC TEACHING

LABS + CLASS-RMS

OPEN LEARNING COMMONS

LABS + CLASS-RMS

OPEN LEARNING COMMONS

SEMINAR

TEACHER CTR

TEACHER CTR

PRESENTATION

FRANK LOCKER Educational Planning

Woods Bagot Architects



learning commons



# Minnesota New Country School

Henderson, MN

G

PERSONALIZED LEARNING: STUDENT INITIATED PROJECTS,  
TEACHER AS ADVISOR, INDIVIDUAL STUDENT WORKSTATIONS

